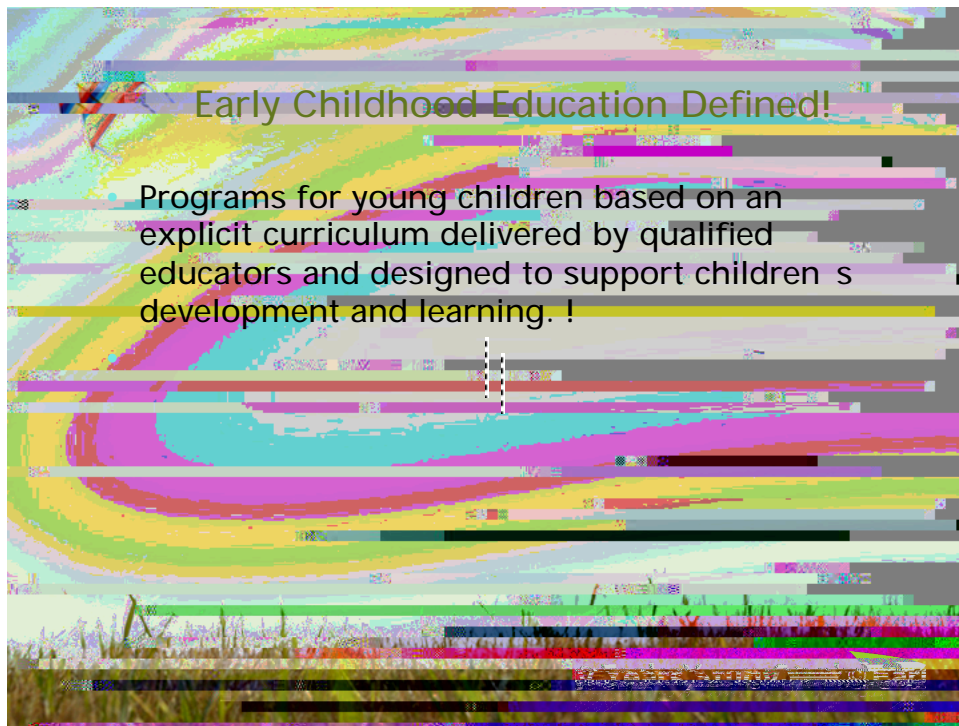


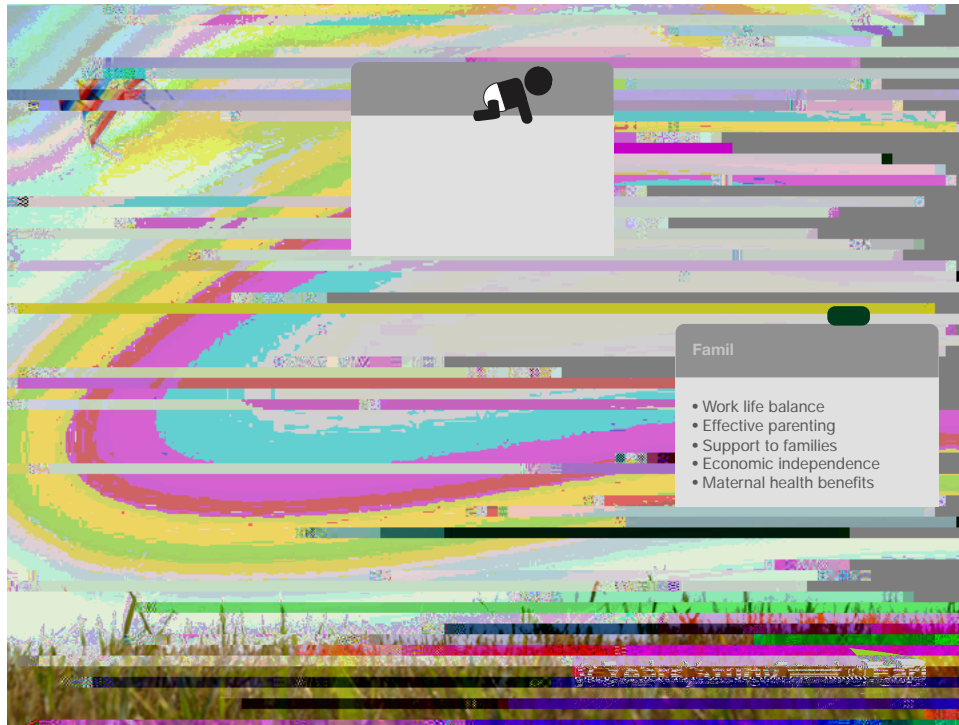
Public policy making!

Evidence!	Values!	Pragmatics!
Administrative data!	What's important!	Timing in political cycle!
Cost/benefit analysis!	History!	Ability to communicate!
Policy analysis!	Cultural context!	Leadership capacities!
Empirical studies!		Systems capacities!
Observational studies!		
Action Research!		

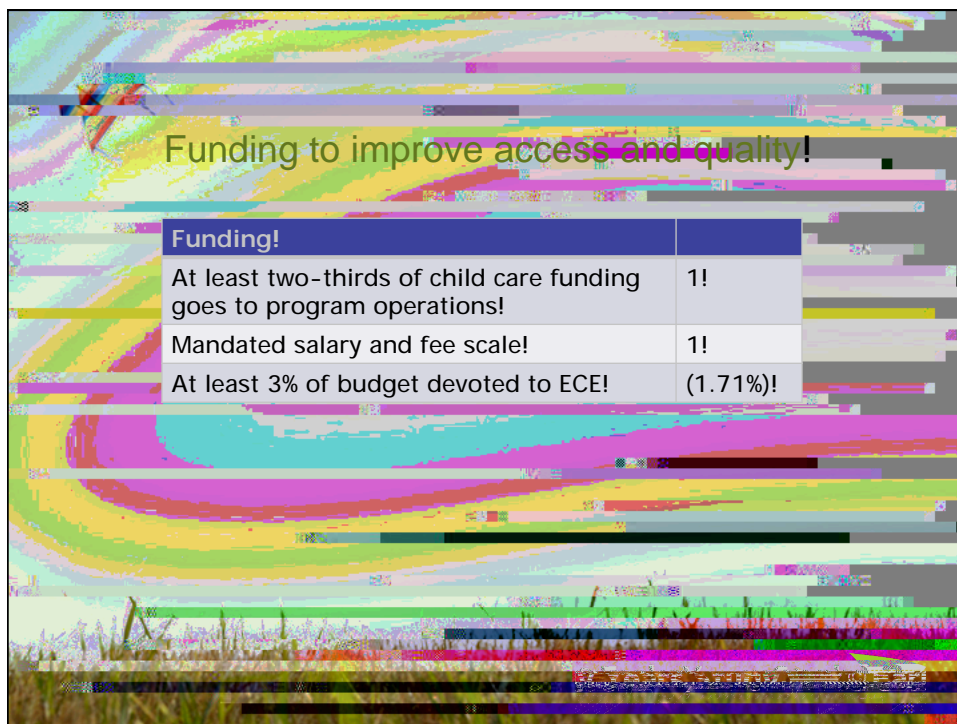
Evidence - Policy!

- A confluence of best available scientific, professional and government data and information!
- Recognition of strengths and limitations of each line of evidence!
- Recommendations to inform the policy making process !



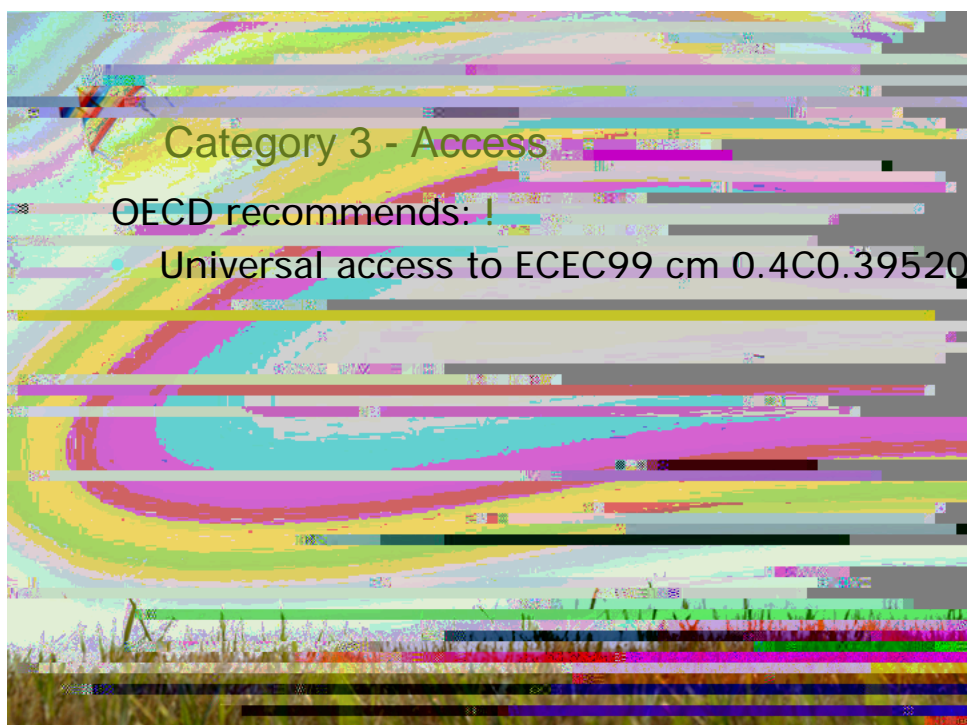






Funding to improve access and quality!

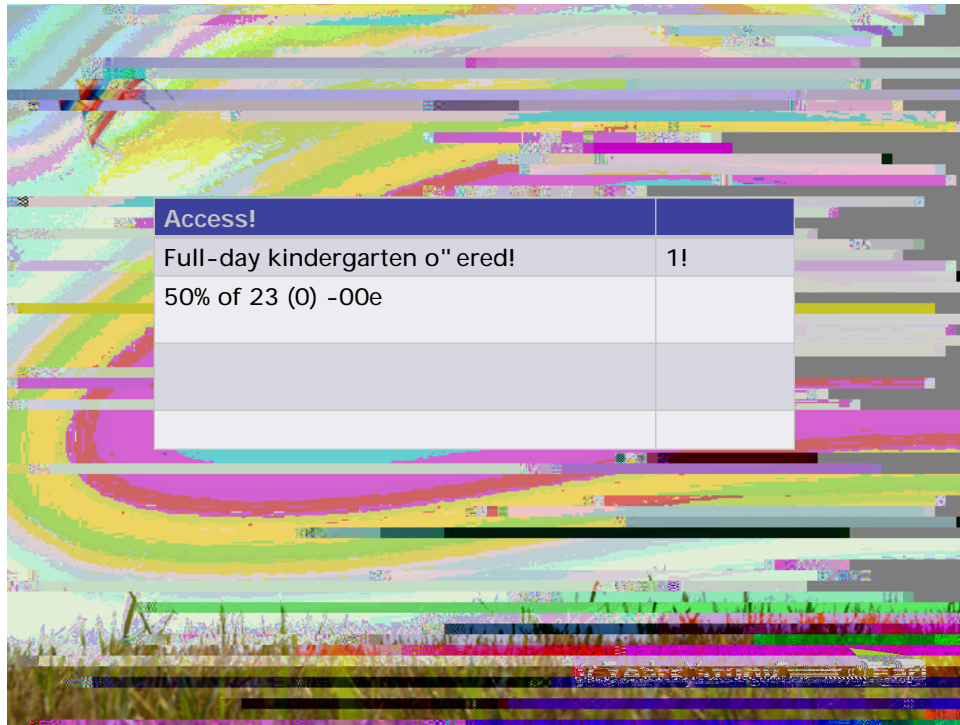
Funding!	
At least two-thirds of child care funding goes to program operations!	1!
Mandated salary and fee scale!	1!
At least 3% of budget devoted to ECE!	(1.71%)!



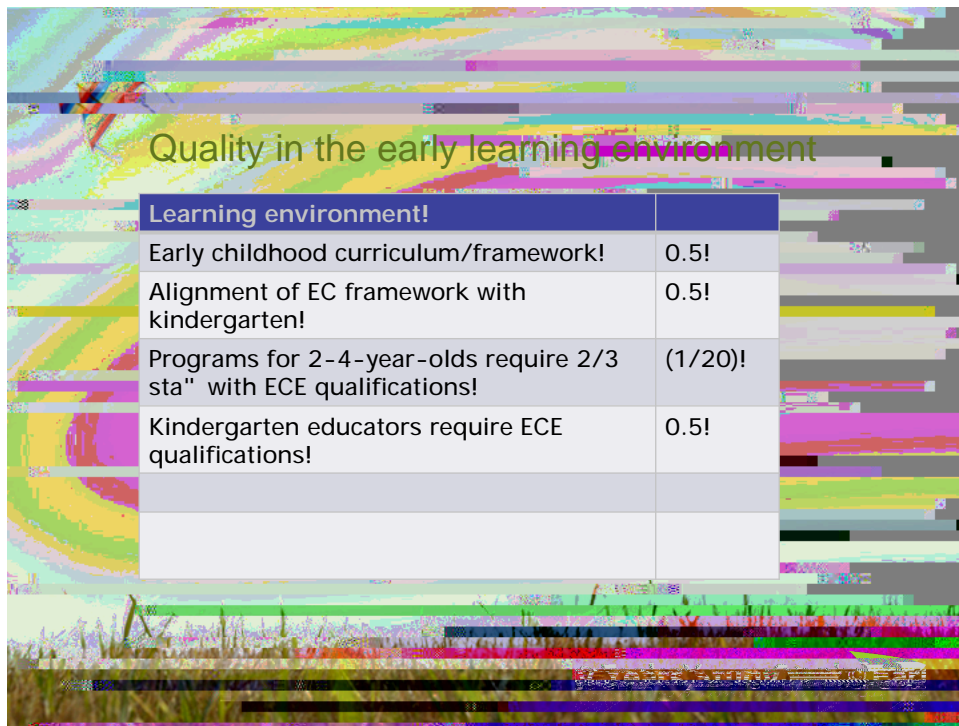
Category 3 - Access

OECD recommends: !

Universal access to ECEC99 cm 0.4C0.39520



Access!	
Full-day kindergarten offered!	1!
50% of 23 (0) -00e	



Quality in the early learning environment

Learning environment!	
Early childhood curriculum/framework!	0.5!
Alignment of EC framework with kindergarten!	0.5!
Programs for 2-4-year-olds require 2/3 sta" with ECE qualifications!	(1/20)!
Kindergarten educators require ECE qualifications!	0.5!



